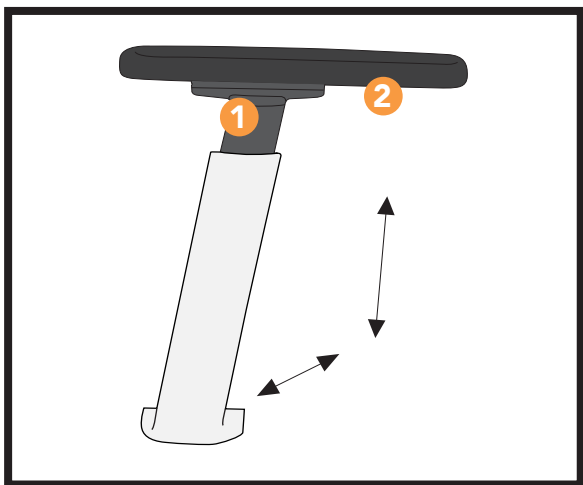


# via seating's user guide

## 51A/52A/53A - Adjustable Height Arm



- 1 height adjustment** - while lifting up on the small switch, use your hand grasping the arm cap to raise and lower the arm height. range 7.5" to 11.5".
- 2 optional arm cap rotation** - grasp arm cap and turn left or right. rotates 15° each way.
- 2 optional arm cap slide** - grasp arm cap and slide forward or back. slides 1.5"

**optional adjustable width bracket adds +2.25"/each side**

