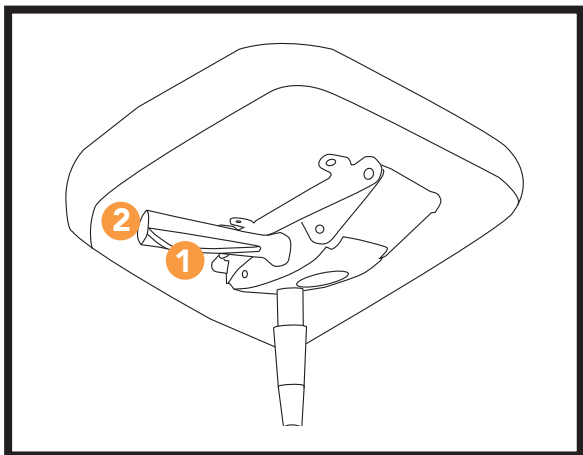


# via seating's user guide

## 35C - Swivel & Tilt Control



- 1 seat height adjustment** - adjust the seat height by lifting the paddle (located just below front, right corner of the seat cushion). proper seat height is realized when the top of your legs are somewhat parallel to the floor.
- 2 back lock (single position)** - lock the back in a fixed position by pushing the button on the end of the control paddle. to unlock, push the button again.

**this control is used for tall and extra tall stool**

