

VOSS (mesh)



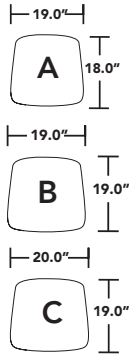
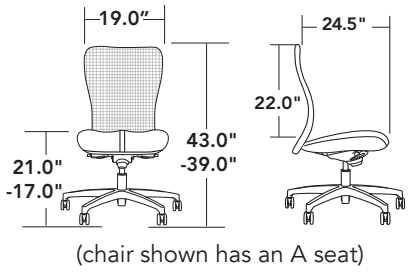
TASK | CONFERNECE | STOOL

- high and mid back options
- mid back offers ratchet back height adjustment
- swivel tilt & full ergonomic syncro controls
- comfortable contoured seat with stylish center stitching
- designed for management, task and conference applications

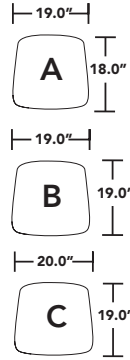
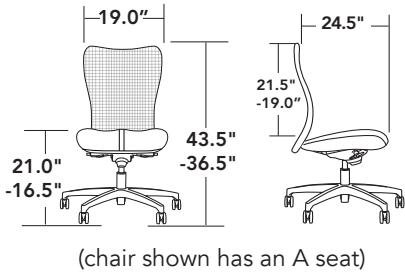

SEATING

high back

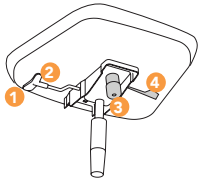
fixed mesh - 2V14/2V24/2V34
ratchet mesh - 2R14/2R24/2R34



mid back - 2R12/2R22/2R32



controls

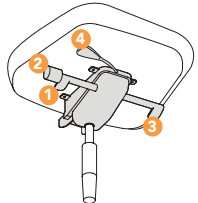


-25C/26C swivel tilt control

use for: conference seating

1. seat height adjustment
2. tilt lock
3. back/recline tension adjustment
4. seat slider on 26C (range: 2.5")

note: Seat and back tilt as a unit
weight capacity: 275 lbs

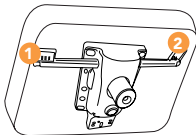


-61C/62C syncro control with Side tension adjustment

use for: task | conference seating

1. seat height adjustment
2. back/recline tension adjustment
3. tilt lock
4. seat slider on 62C (range 2.5")

note: seat and back move at 2:1 ratio
weight capacity: 300 lbs



-34C swivel and tilt control

use for: drafting stools

1. seat height adjustment
2. tilt lock

note: seat angle is fixed
weight capacity: 300 lbs
(N/A on C seats)

arms



-38A
adjustable height
arm

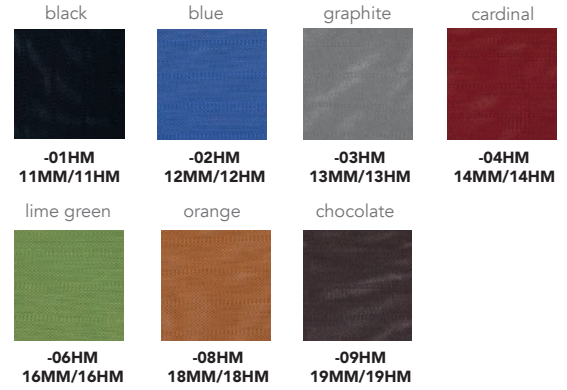


-39A
adjustable height,
rollback arm



-51A/52A/53A
black, white or
polished adjustable
height arm

mesh colors



bases



addition options (full list available in price book)

SUFFIX	DESCRIPTION
-8	standard cap: 38A, 39A
-18S	standard cap: 51A, 52A, 53A
-17AB	width adjustment bracket: 38A, 51A, 52A, 53A
-21TB133T	TB133 fire rated products
-16HP	standard black carpet caster
-16SCG	gray hard floor caster
-16GL	black glides
-11DR	tall stool kit (only on -3C, N/A C seat)
-11XDR	extra tall stool kit (only on -3C, N/A C seat)
-11MG	mesh guard (extends warranty duration)