

proform (upholstered)



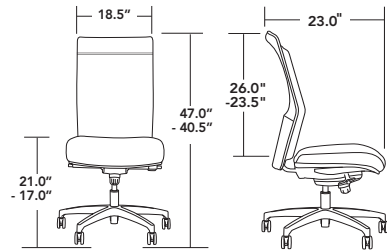
TASK | CONFERENCE | STOOL

- high and mid back options
- ratchet back height adjustments
- simple swivel tilt & full ergonomic syncro controls
- designed for management, task and conference applications
- mesh version also available

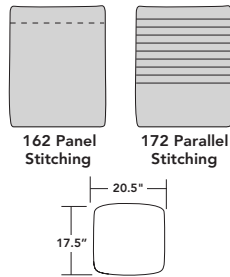
**via**TM
SEATING

proform (upholstered)

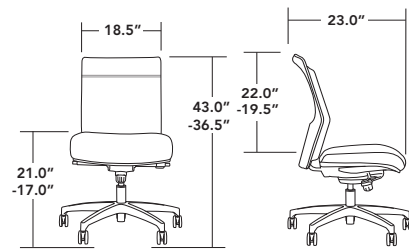
high back
 panel stitch - 162
 parallel stitch - 172
 diamond stitch - 182



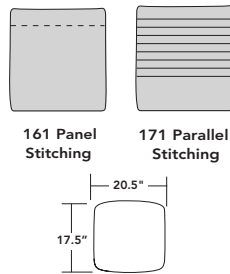
(chair shown has a panel stitch back)



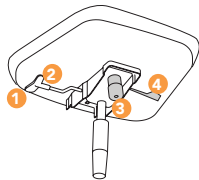
mid back
 panel stitch - 161
 parallel stitch - 171
 diamond stitch - 181



(chair shown has a panel stitch back)



controls



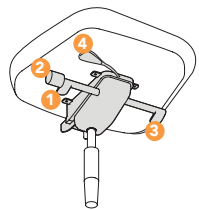
-25C/26C
swivel tilt control

use for: conference seating

1. seat height adjustment
2. tilt lock
3. back/recline tension adjustment
4. seat slider on 26C (range: 2.5")

note: Seat and back tilt as a unit

weight capacity: 275 lbs



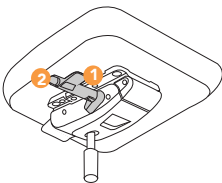
-61C/62C
syncro control with Side tension adjustment

use for: task | conference seating

1. seat height adjustment
2. back/recline tension adjustment
3. tilt lock
4. seat slider on 62C (range 2.5")

note: seat and back move at 2:1 ratio

weight capacity: 300 lbs



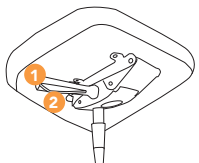
-66C
basic body balance control

use for: task | conference seating

1. seat height adjustment
2. back lock adjustment (5 position)
3. seat slider with 12SS (range 2")

note: seat and back move at 3:1 ratio

weight capacity: 300 lbs



-35C
swivel and tilt control

use for: drafting stools

1. seat height adjustment
2. back lock (single position)

note: seat angle is fixed

weight capacity: 300 lbs

arms



-10A
 adjustable height straight upright



-38A
 adjustable height arm



-39A
 adjustable height, rollback arm



-51A/52A/53A
 black, white or polished adjustable height arm



-96A/97A
 black polyurethane or polished aluminum with black cap



-59A/54A/55A
 black polyurethane, polished or polished with cap



-61A
 polished aluminum with fully upholstered cap

bases



26" black polyurethane



26" polished aluminum



26" brushed aluminum



26" white aluminum

addition options (full list available in price book)

SUFFIX	DESCRIPTION
-12SS	seat slide (N/A on 11DR, 11XDR)
-18S	standard cap: 51A, 52A, 53A
-19AB	width adjustment bracket: 38A, 51A, 52A, 53A
-20AB	width adjustment bracket: 10A
-21TB133T	TB133 fire rated products
-16HP	standard black carpet caster
-16SCG	gray hard floor caster
-16GL	black glides
-11DR	tall stool kit (only on -3C, N/A C seat)
-11XDR	extra tall stool kit (only on -3C, N/A C seat)

