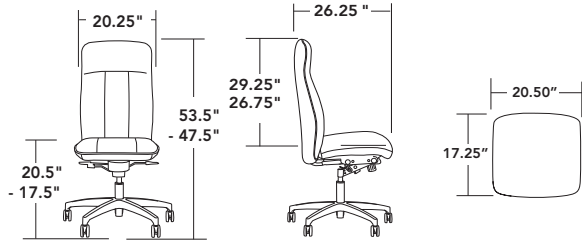




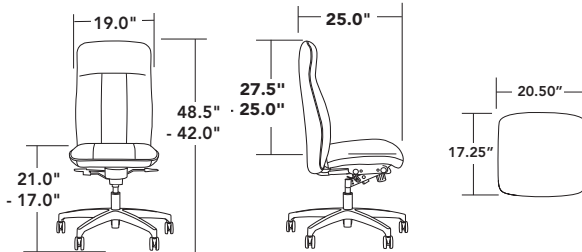
CONFERENCE | EXECUTIVE

- high and mid back options
- articulating head rest (high back)
- both back styles offer ratchet back height adjustment
- knee tilt & full ergonomic syncro controls
- designed for executive, management and conference applications
- steel frame construction with injection molded foam
- function, comfort and traditional executive styling

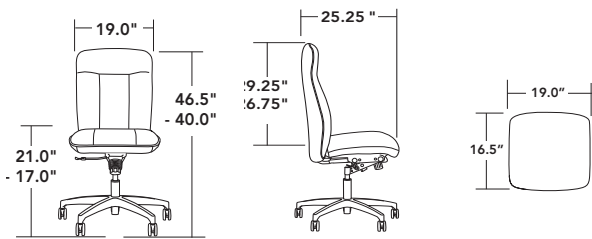
full scale high back - 4703



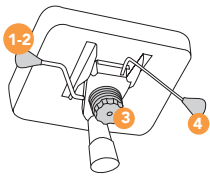
mid scale high back - 4603



mid back - 4701



controls



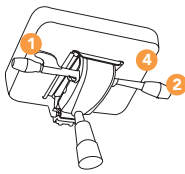
-12C/13C
single
position knee-
tilt control

use for: executive | conference seating

1. seat height adjustment
2. tilt lock
3. back/recline tension adjustment
4. seat slider on 13C (range: 2.5")

note: single shell models only

weight capacity: 300 lbs



-9C/-10C
syncro
control with
side tension
adjustment

use for: task | conference seating

1. seat height adjustment
2. back angle lock (5 position)
3. tilt recline tension
4. seat slider on 10C (range: 2.5")

notes: seat and back move at 2:1 ratio
9CH/10CH: heavy duty spring tension

weight capacity: 300 lbs

arms



-12A
fully upholstered
panel arm



-80A/90A
black polyurethane
or fully upholstered
"C" arm



-13A/14A
black polyurethane
or fully upholstered
cantilever arm



-51A/52A/53A
black, white or
polished adjustable
height arm

bases



addition options (full list available in price book)

| SUFFIX | DESCRIPTION |
|------------------|---|
| -18S | standard cap: 51A, 52A, 53A |
| -19AB | width adjustment bracket: 51A, 52A, 53A |
| -47LP | lumbar cushion |
| -1CRC | conference control (12C, 13C only) |
| -21TB133E | TB133 fire rated products |
| -16HP | standard black carpet caster |
| -16SCG | gray hard floor caster |
| -16GL | black glides |

