

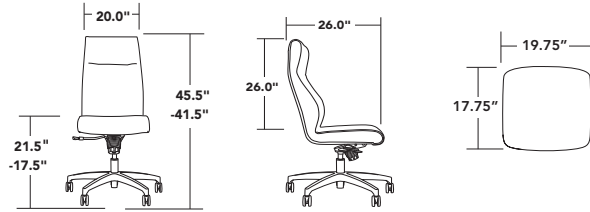


---

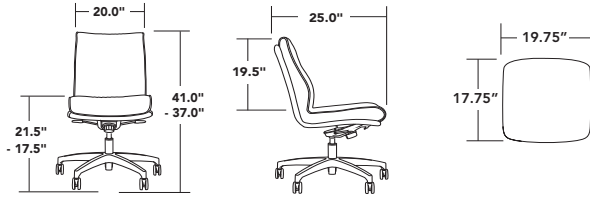
## CONFERENCE | EXECUTIVE

- glove-like comfort and unique function
- two back styles: high and mid back
- high back features an articulating headrest
- single shell structure
- knee tilt control, sled base & jury base
- proprietary hinge system for comfort and support

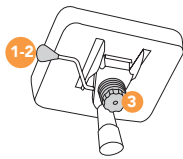
high back - 5303



mid back - 5301



controls



**-11C**  
single position knee-tilt control

use for: executive | conference seating

1. seat height adjustment
2. tilt lock
3. back/recline tension adjustment

note: single shell models only  
weight capacity: 300 lbs

arms



**-2A/4A**  
black polyurethane with or without fully upholstered arm cap



**-80A/90A**  
black polyurethane or fully upholstered "C" arm



**-51A/52A/53A**  
black, white or polished adjustable height arm

bases



26" black polyurethane



26" polished aluminum



26" brushed aluminum



26" white aluminum

addition options (full list available in price book)

SUFFIX	DESCRIPTION
<b>-18S</b>	standard cap: 51A, 52A, 53A
<b>-19AB</b>	width adjustment bracket: 51A, 52A, 53A
<b>-1CRC</b>	conference control (11C only)
<b>-21TB133E</b>	TB133 fire rated products
<b>-16HP</b>	standard black carpet caster
<b>-16SCG</b>	gray hard floor caster
<b>-16GL</b>	black glides
<b>-19JRY1</b>	black mounted jury base (mid back only)

