

carmel

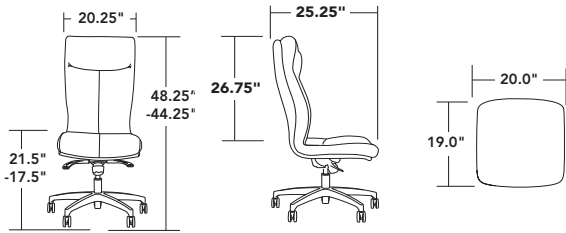


CONFERENCE | EXECUTIVE

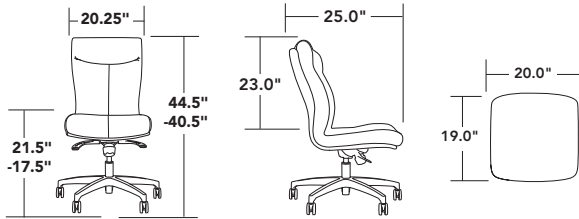
- high performance execu-task seating series
- two back styles: high and mid back
- split back or single shell structure
- split back option offers seat depth adjustment
- knee tilt, syncro with side tension & syncro with seat slide controls
- tuxedo tailoring and stitching


viaTM
SEATING

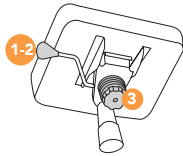
high back - 6903



mid back - 6901



controls

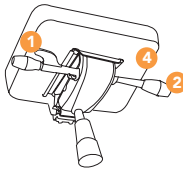


-11C
single position
knee-tilt
control

use for: executive | conference seating

1. seat height adjustment
2. tilt lock
3. back/recline tension adjustment

note: single shell models only
weight capacity: 300 lbs

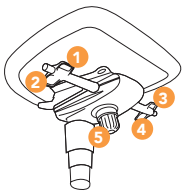


-9C/-10C
syncro
control with
side tension
adjustment

use for: task | conference seating

1. seat height adjustment
2. back angle lock (5 position)
3. tilt recline tension
4. seat slider on 10C (range: 2.5")

notes: seat and back move at 2:1 ratio
9CH/10CH: heavy duty spring tension
weight capacity: 300 lbs



-29C
full function
syncro control

use for: conference seating

1. seat height adjustment
2. tilt lock (4 positions)
3. seat slider included (range 2")
4. back recline tension adjustment
5. back resistance adjustment

note: seat and back move at 2:1 ratio
weight capacity: 300 lbs

arms



-80A/90A
black polyurethane
or fully upholstered
"C" arm



-51A/52A/53A
black, white or
polished adjustable
height arm

bases



addition options (full list available in price book)

SUFFIX	DESCRIPTION
-18S	standard cap: 51A, 52A, 53A
-19AB	width adjustment bracket: 51A, 52A, 53A
-1CRC	conference control (11C only)
-12LUM	mechanical lumbar
-21TB133E	TB133 fire rated products
-16HP	standard black carpet caster
-16SCG	gray hard floor caster
-16GL	black glides
-19JRY1	black mounted jury base (mid back only)

