

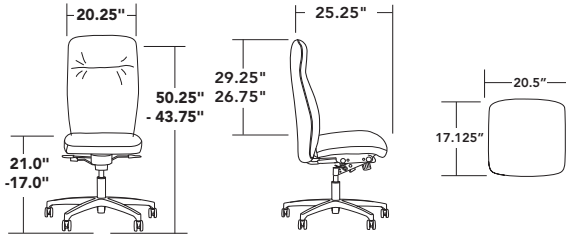


---

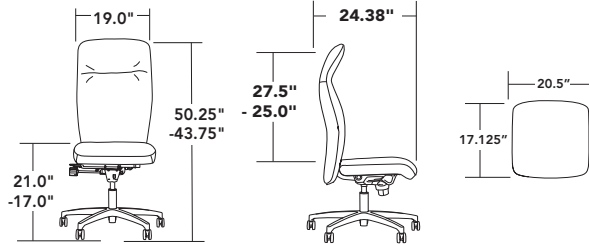
CONFERENCE | EXECUTIVE

- high and mid back options
- articulating head rest (high back)
- both back styles offer ratchet back height adjustment
- knee tilt & full ergonomic syncro controls
- designed for executive, management and conference applications
- steel frame construction with injection molded foam
- function, comfort and traditional executive styling

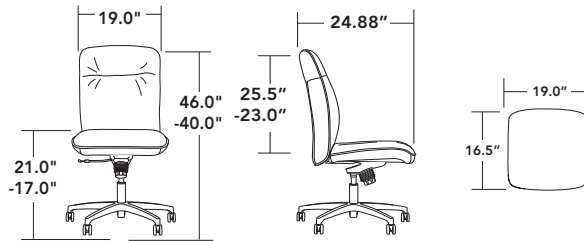
full scale high back - 4103



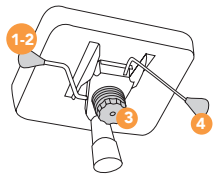
mid scale high back - 4303



mid back - 4101



controls

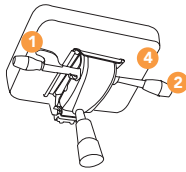


**-12C/13C**  
single position knee-tilt control

use for: executive | conference seating

1. seat height adjustment
2. tilt lock
3. back/recline tension adjustment
4. seat slider on 13C (range: 2.5")

note: single shell models only  
weight capacity: 300 lbs



**-9C/-10C**  
syncro control with side tension adjustment

use for: task | conference seating

1. seat height adjustment
2. back angle lock (5 position)
3. tilt recline tension
4. seat slider on 10C (range: 2.5")

notes: seat and back move at 2:1 ratio  
9CH/10CH: heavy duty spring tension  
weight capacity: 300 lbs

arms



**-12A**  
fully upholstered panel arm



**-80A/90A**  
black polyurethane or fully upholstered "C" arm



**-13A/14A**  
black polyurethane or fully upholstered cantilever arm



**-51A/52A/53A**  
black, white or polished adjustable height arm

bases



addition options (full list available in price book)

SUFFIX	DESCRIPTION
<b>-18S</b>	standard cap: 51A, 52A, 53A
<b>-19AB</b>	width adjustment bracket: 51A, 52A, 53A
<b>-1CRC</b>	conference control (12C, 13C only)
<b>-21TB133E</b>	TB133 fire rated products
<b>-16HP</b>	standard black carpet caster
<b>-16SCG</b>	gray hard floor caster
<b>-16GL</b>	black glides

