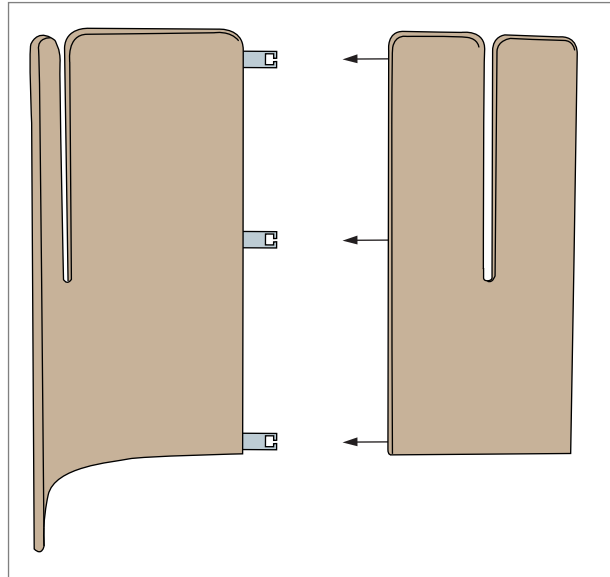
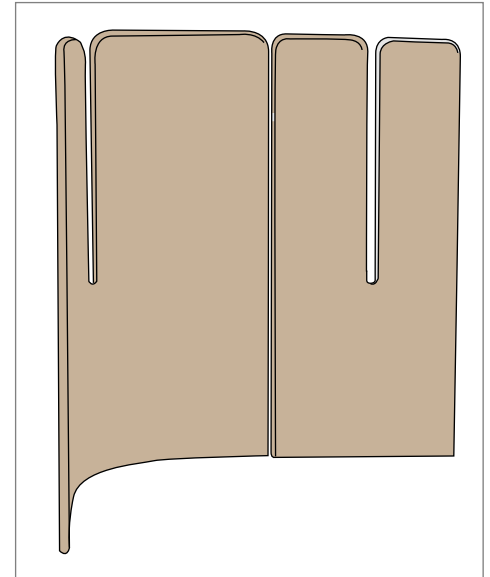


Push brackets into slots until they "click" into place.



Connect second panel to brackets of first panel until they "click" into place.

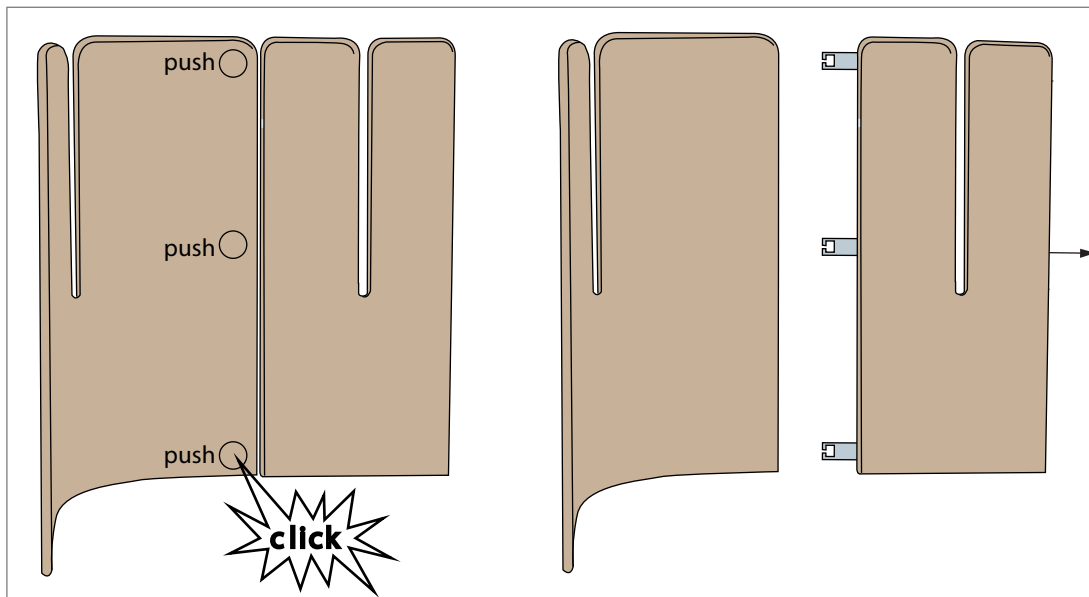


Make sure all brackets are locked into both panels before continuing.

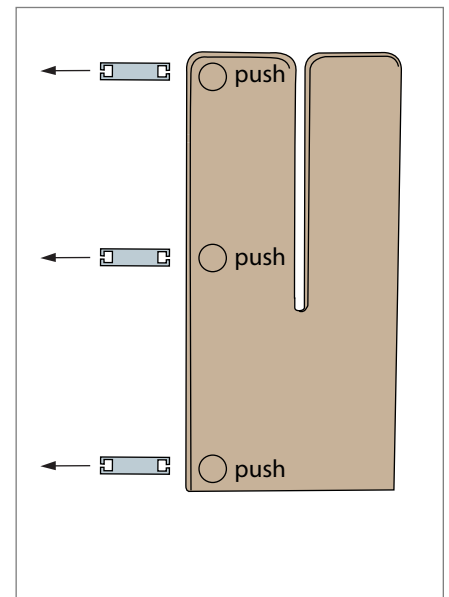
NOTE: For thicker fabrics the clicking sound may be muffled. Pull gently on panels to make sure they are locked together.



Panel Disassembly



Unlock the panel brackets by pressing the buttons located 2.5 inches from the edge of the inside panel surface. You will hear a "click" when buttons are fully depressed. Pull panels apart.



Remove the remaining brackets by pressing the buttons located on the inside surface of the panel.